



- Continuous Lens System
- Built-in HDMI 4K digital image output system

OralOptix Prime[®]

Surgical Microscope

To see a small beginning



German Lenses



Imaging Configuration (Built-in)

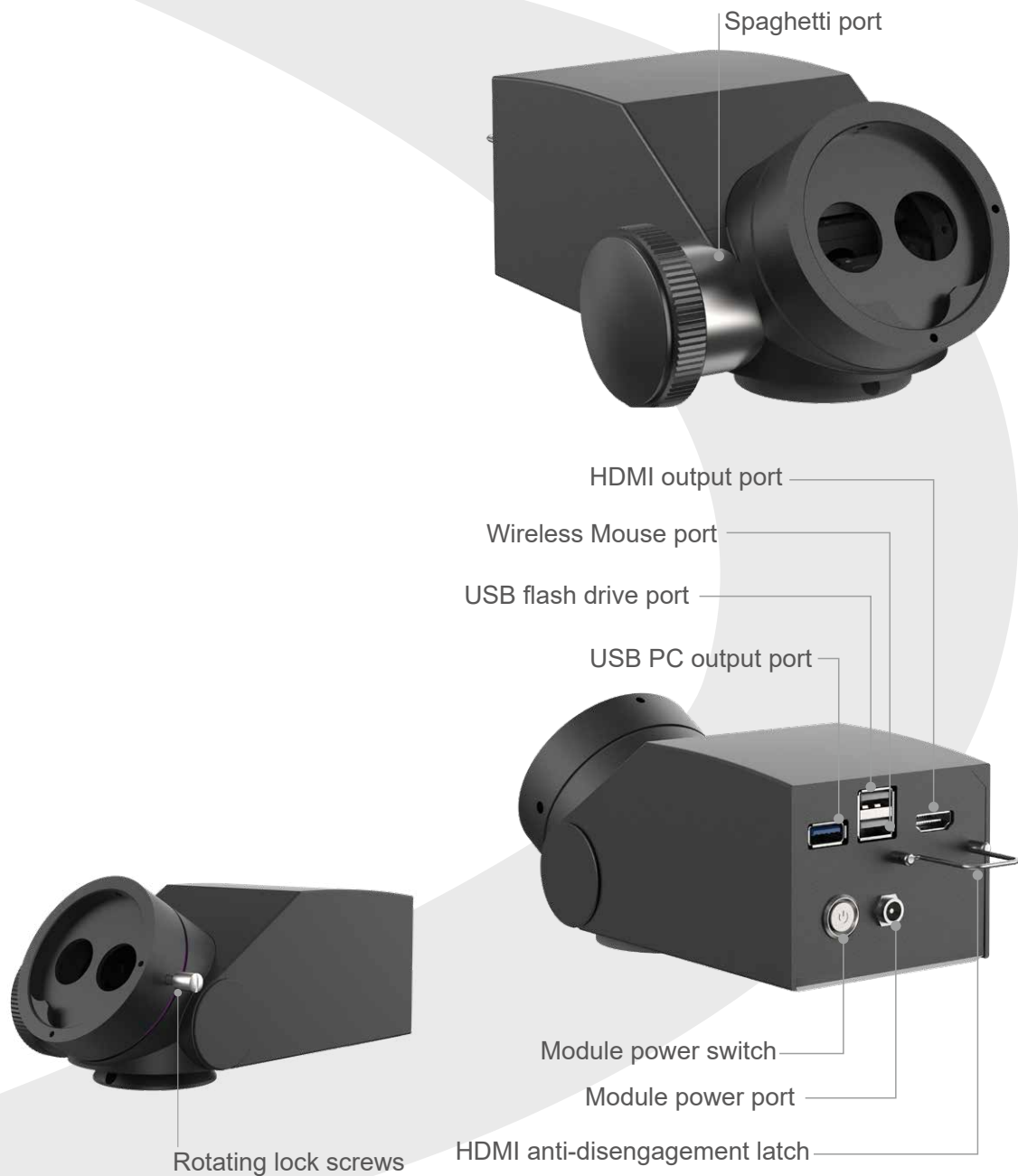
Built-in HDMI 4K Full HD digital image output system.

During treatment, the high-definition image is clearly displayed through the connected monitor, which is helpful for conducting clinical work, teaching, scientific research, and facilitating communication between the dentist and patients.



Built-in 4K module

Built-in 4K High-Definition Image Output



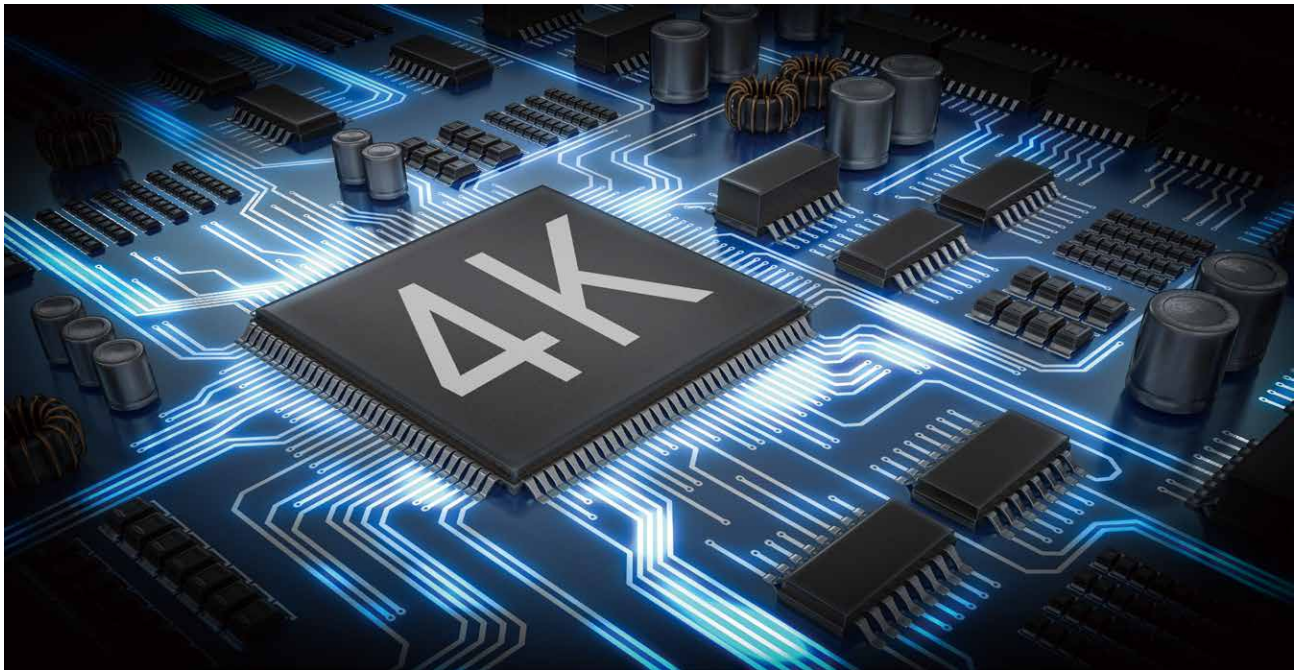
4K functions: integrated image module, rotating ring, extender, and spectrophotometer.

HDMI signal output to the display.

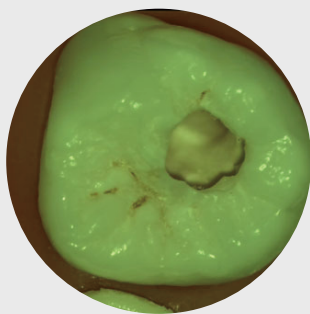
With a USB port for connection to a wireless mouse and USB flash drive, the photos and videos taken can be stored on the USB drive.

Four-in-One Integrated 4K Module

4K Ultra-HD camera and video module: the resolution is four times that of 1080P, presenting ultra-clear and detailed images. The video can be stored on a high-speed USB drive after capture, with a wireless foot control function for convenient and quick operation.

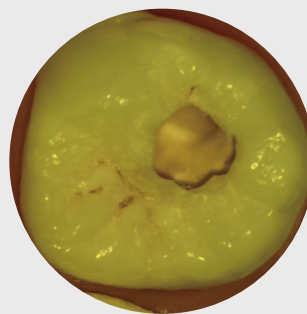


Built-in Orange Filter + Green Filter



Green Filter

Enables you to see tiny nerves and vessels clearly in the surgical environment, even with blood present.



Orange Filter

Prevents resin material curing interference from curing too quickly.

German Schott Glass

The Ultimate Optical Experience

German Schott Glass is designed to eliminate colour differences and features a multi-layer optical coating to improve visibility. It clearly restores the details of the operating area, providing better colour fidelity and light sensitivity, and adapts well to both high-brightness and extremely dark shooting environments.



Continuous Lens System

Turn the magnification adjustment knob to achieve continuous, smooth, and seamless operation. The vision will not be interrupted during the zoom in process. The magnification factor can be continuously adjusted from 0.4X to 2.4X, and the total magnification can range from 3.4X to 21.4X. Continuous magnification allows the doctor to maintain a clear field of vision under the microscope for uninterrupted observation.



Continuous Lens

290mm Zoom Objective Lens

With an extended working range of 190-480mm, the system accommodates full oral depth coverage, eliminating positional adjustments during procedures. There is no need to move the microscope or change the working position; instead, simply adjust the focus of the objective lens to achieve a clear vision, efficiently and quickly.





No External Cables

The entire instruments' cable-free design enhances ergonomic flexibility. This sleek and aesthetically pleasing microscope integrates perfectly into the clinical environment

Ease of Maintenance

Modular design allows for quick troubleshooting of faulty modules, enabling swift maintenance and repair. Machine troubleshooting and repairs can be completed within ten minutes.

German-engineered Gas Spring Balance Arm

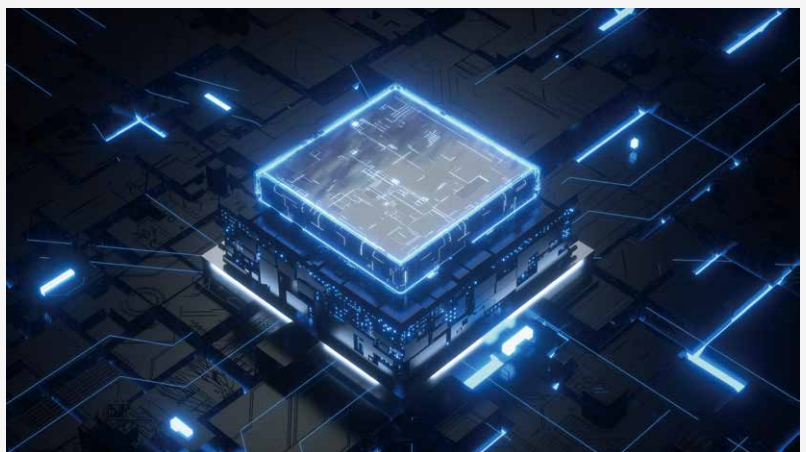


The spring can actively balance, and the damping double-adjustment balance arm system offers more active balance than traditional single-damping arms, offsetting the influence of gravity. This allows the microscope's main mirror to achieve optimal balance. The microscope's main mirror can hover at any position and can be adjusted smoothly.

Medical-grade LED Illumination

Utilising a top-level medical LED light source with a lifespan of 65,000 hours.

The high colour rendering index is close to natural light, providing more realistic colours and reducing eye fatigue.



Flexible Operation

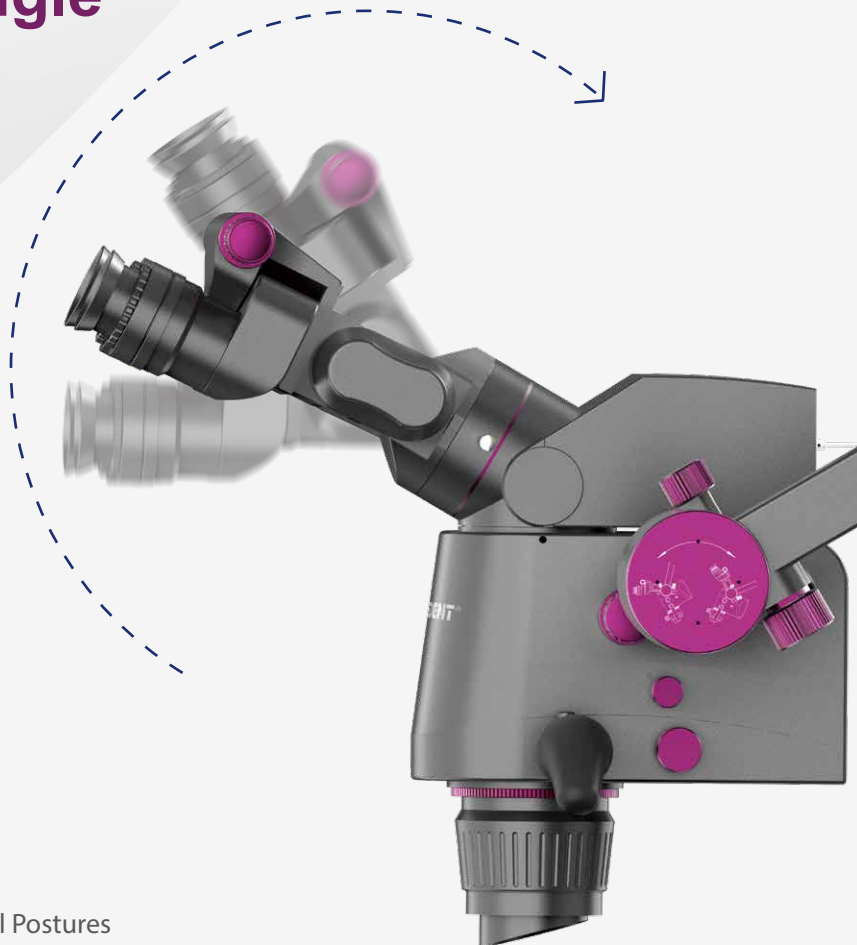
Fluid, Precision Control

While maintaining the horizontal viewing position of the eyepiece, the lens position can be adjusted forwards and sideways using very smooth manual controls.



0-220° Variable Angle Binoculars

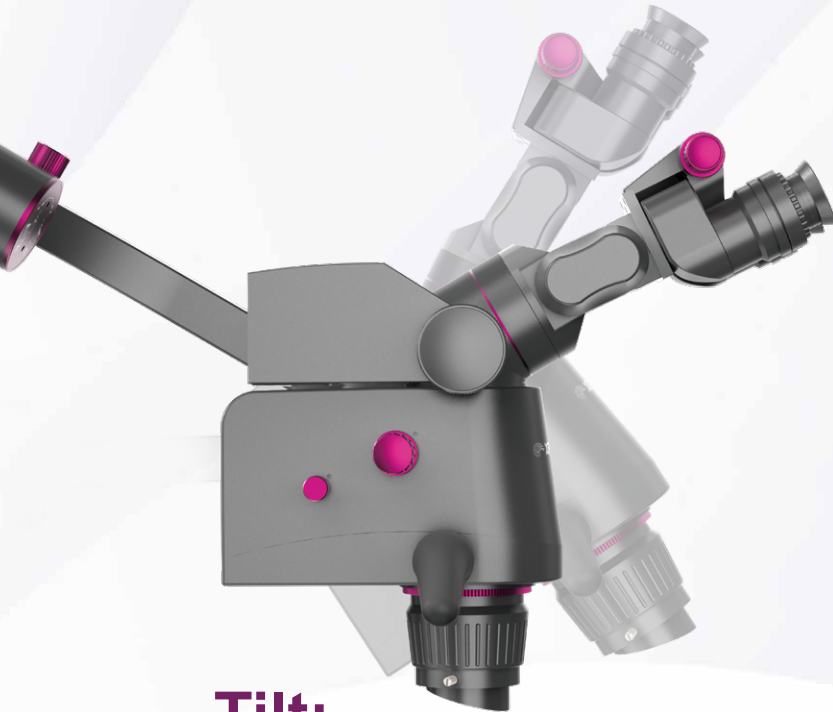
These can be adjusted as required, providing a comfortable posture during different operations to improve work flexibility. It effectively reduces and prevents muscle strain on the waist, neck, and shoulders, helping clinicians avoid issues such as cervical spondylosis and lumbar spondylosis.



Reduces Occupational Strain: Supports Neutral Postures

Pendulum System

Horizontal: This allows observation from any angle.



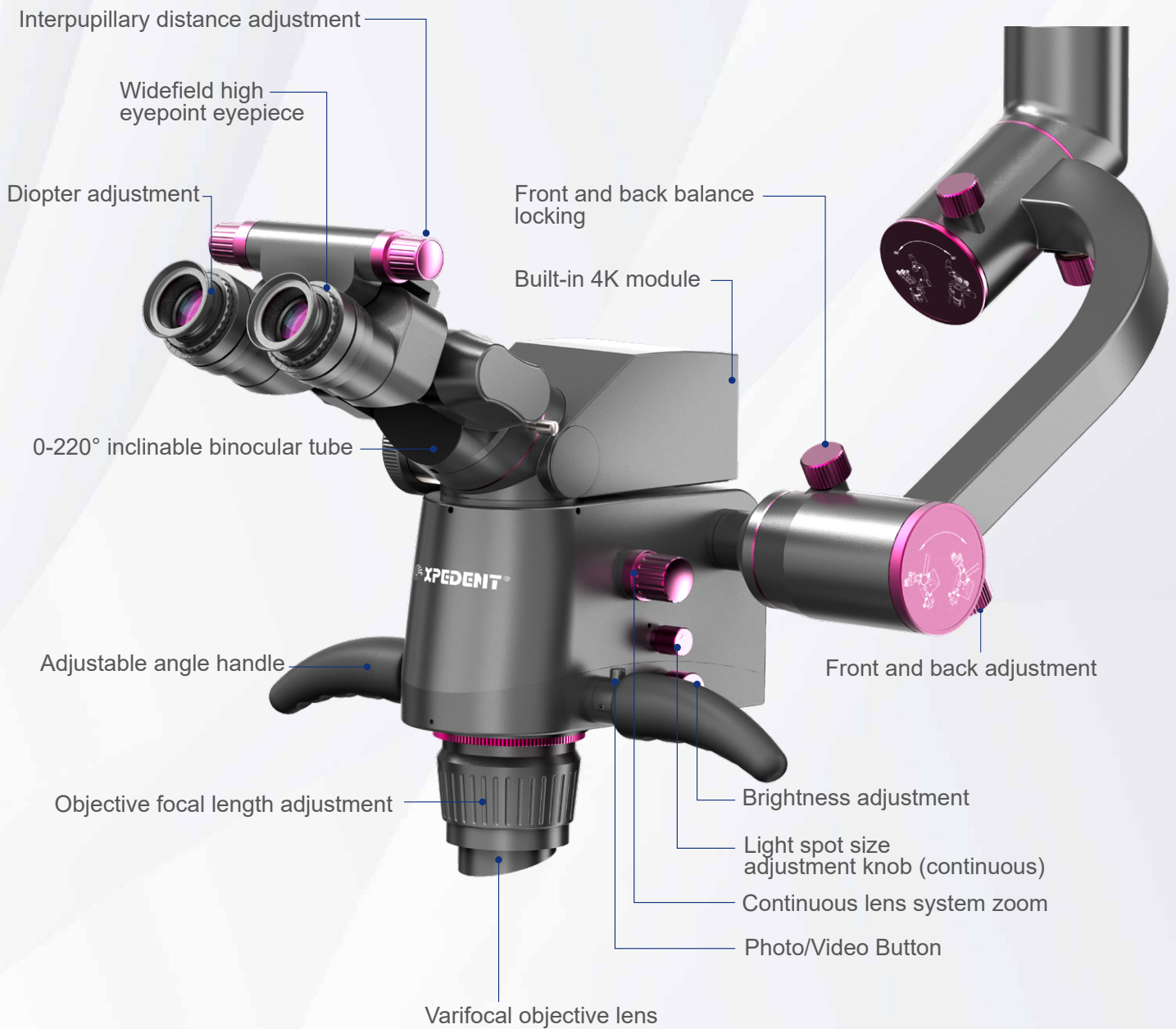
Tilt:

The mirror body can be tilted back and forth, enhancing operator comfort for a variety of different operations.

Product Components



Product Components



Basic Configuration

Amplification and magnification system	Continuous lens system
Binocular Tube	220° variable angle binocular lens tube
Eyepiece	12.5x wide-angle eyepiece, visual adjustment range: $\pm 7D$, pupil distance adjustment range: 51-76mm
Large Zoom Objective	F190-480mm
Surface Illuminance	Greater than 100,000 LUX
Spot Diameter	Optional: Medium 78mm, infinitely adjustable spot size
Field of View Diameter	Middle 61.8mm - Middle 9.8mm
Colour Filter	Orange, green
Wall-mounted Counterbalance System	Spring active balance + damping dual adjustment balance arm system
Arm Extension	1860mm
Lighting System	LED lighting source with continuously adjustable brightness and a lifespan of no less than 65,000 hours
Automatic Switching Device	The switch in the small cross arm automatically closes when it is raised to the maximum height
Installation Method	Column roller type, "H" shaped base
External Imaging Solution	Camera digital port, suitable for Canon, Nikon, Sony, and other cameras. Includes a 30-degree extender with an integrated stereo splitter (with a split ratio of 2:8 or 5:5) and a rotating ring.

Follow up



Xpedent eu



Xpedent International



Xpedent



jenny@xpedent.com

www.xpedent.com



European Authorized Representative

Company

SUNGO Europe B.V.

Address

Fascinatio Boulevard 522, Unit 1.7, 2909VA Capelle aan den IJssel, The Netherlands

Email

Andreas@xpedent.com